


BRIEF COMMUNICATION

Open Access



# Detection of *Leishmania infantum* DNA and antibodies against *Anaplasma* spp., *Borrelia burgdorferi* s.l. and *Ehrlichia canis* in a dog kennel in South-Central Romania

Cristina Daniela Cazan<sup>1\*</sup> , Angela Monica Ionică<sup>1,2</sup>, Ioana Adriana Matei<sup>1,3</sup>, Gianluca D'Amico<sup>1</sup>, Clara Muñoz<sup>4</sup>, Eduardo Berriatua<sup>4</sup> and Mirabela Oana Dumitrache<sup>1</sup>

## Abstract

Canine vector-borne diseases are caused by pathogens transmitted by arthropods including ticks, mosquitoes and sand flies. Many canine vector-borne diseases are of zoonotic importance. This study aimed to assess the prevalence of vector-borne infections caused by *Dirofilaria immitis*, *Ehrlichia canis*, *Borrelia burgdorferi* sensu lato, *Anaplasma* spp. and *Leishmania infantum* in a dog kennel in Argeş County, Romania. Dog kennels are shelters for stray dogs with no officially registered owners that are gathered to be neutered and/or boarded for national/international adoptions by various public or private organizations. The international dog adoptions might represent a risk in the transmission of pathogens into new regions. In this context, a total number of 149 blood samples and 149 conjunctival swabs from asymptomatic kennel dogs were assessed using serology and quantitative real-time polymerase chain reaction. Antibodies against *B. burgdorferi* s.l. were detected in one dog (0.6%), anti-*Anaplasma* antibodies were found in five dogs (3.3%), while ten dogs (6.7%) tested positive for *D. immitis* antigen. Overall, 20.1% (30/149) of dogs were positive for *L. infantum* DNA. All samples were seronegative for anti-*Leishmania* antibodies. When adopting dogs from this region of Romania, owners should be aware of possible infection with especially *L. infantum*. The travel of infected dogs may introduce the infection to areas where leishmaniasis is not present.

**Keywords:** Canine vector-borne diseases, Dogs, Epidemiology, Kennel, *Leishmania infantum*

## Findings

Canine vector-borne diseases (CVBDs) are currently an emerging problem due to the zoonotic character of some pathogens, for which dogs can serve as sentinels of human infection [1]. CVBDs are mainly caused by various species of bacteria and parasites, transmitted to dogs by arthropod vectors, especially ticks, mosquitoes or sand flies [2]. Among some of the major CVBD agents

that can infect dogs are the nematode *Dirofilaria immitis*, bacteria such as *Ehrlichia canis*, *Borrelia burgdorferi* sensu lato, *Anaplasma phagocytophilum*, and the protozoan *Leishmania infantum* [3]. Evidence of northward and eastward expansion of *L. infantum* in non-endemic areas of Europe has been recorded, including in Romania [4]. In 2014, after 80 years with no data, a case of canine leishmaniasis (CanL) was described in Romania, raising the need for updates on the disease in the country [5]. In 2016, the first study to evaluate the prevalence of CanL in Romania by sensitive polymerase chain reaction (PCR) and serology revealed a 3.7% seropositivity and 8.7% PCR-positivity in the tested dogs (n = 80) [6].

\*Correspondence: cristina.cazan@usamvcluj.ro

<sup>1</sup> Department of Parasitology and Parasitic Diseases, University of Agricultural Sciences and Veterinary Medicine of Cluj-Napoca, Calea Mănăştur 3-5, 400372 Cluj-Napoca, Romania  
Full list of author information is available at the end of the article



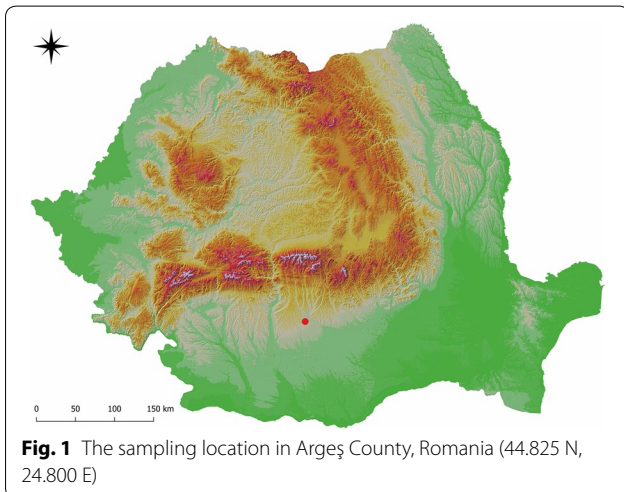
© The Author(s) 2020. This article is licensed under a Creative Commons Attribution 4.0 International License, which permits use, sharing, adaptation, distribution and reproduction in any medium or format, as long as you give appropriate credit to the original author(s) and the source, provide a link to the Creative Commons licence, and indicate if changes were made. The images or other third party material in this article are included in the article's Creative Commons licence, unless indicated otherwise in a credit line to the material. If material is not included in the article's Creative Commons licence and your intended use is not permitted by statutory regulation or exceeds the permitted use, you will need to obtain permission directly from the copyright holder. To view a copy of this licence, visit <http://creativecommons.org/licenses/by/4.0/>. The Creative Commons Public Domain Dedication waiver (<http://creativecommons.org/publicdomain/zero/1.0/>) applies to the data made available in this article, unless otherwise stated in a credit line to the data.

In 2019, similar findings were reported. From two investigated dog kennels located in two different counties in South-Eastern Romania (Galați and Călărași), a CanL seroprevalence of 8.3% was present in Galați County ( $n=60$ ), while all samples from Călărași County ( $n=50$ ) were negative. The overall seroprevalence of the study was 4.54% ( $n=110$ ) [7]. Dog kennels are shelters for stray dogs with no officially registered owners that are gathered to be neutered and/or boarded for national/international adoptions by various public or private organizations. Co-infections with CVBD agents are common in kennel dogs, mostly because dogs are easily exposed to more than one vector species and the same vector species (particularly in case of ticks) may be infected with more than one pathogen [8]. Furthermore, apparently healthy dogs are of particular epidemiological importance, as they can act as reservoirs for human diseases [9].

The present study aimed to extend the current epidemiological knowledge on CVBDs in Romania in the context of national/international dog adoptions which might represent a risk in the transmission of pathogens into new regions.

The study was performed during June–September 2017. Blood and conjunctival swab samples were collected from dogs ( $n=149$ ) located in a single kennel in Argeș County (44.825 N, 24.800 E) (Fig. 1), a geographical region that neighbors an area with recent local CanL reports [5, 6]. Prior to sampling, the dogs were examined for clinical signs of CanL, including lymphadenopathy, dermatitis, hair loss, cachexia and hepato-splenomegaly. The origin of the kennel dogs, prior of their gathering in the kennel, was known as local, free roaming dogs.

The occurrence of *Anaplasma* spp., *Borrelia burgdorferi* s.l., *E. canis* and *D. immitis* was assessed by using a serological rapid test, SNAP® 4Dx® (IDEXX Laboratories Inc., Westbrook, ME, USA) according to the manufacturer's instructions.



Also, all serum samples were tested for the presence of anti-*L. infantum* antibodies by using a rapid test (SNAP® Leishmania, IDEXX Laboratories Inc.) followed by the use of a commercial kit (INGEZIM LEISHMANIA 15.LSH.K1, Ingenasa, Spain) according to the manufacturer's instructions.

Genomic DNA was isolated from both blood clots and swabs using a commercial kit (Isolate II Genomic DNA Kit, Bioline, London, UK) according to the manufacturer's instructions. Prior to DNA isolation, the swabs were suspended in 300  $\mu$ L 1 $\times$  phosphate-buffered saline (PBS). All DNA samples were processed by quantitative real-time PCR (qPCR) amplification of the kinetoplast minicircle DNA of *L. infantum*, using the LEISH-1/LEISH-2 primer pair and TaqMan-MGB probe according to [10]. For the qPCR reaction, a positive control containing genomic target DNA and a negative control without DNA were included in order to assess the specificity of the reaction and the presence of cross-contamination.

Statistical analysis was performed using EpiInfo™ 7 software (<https://www.cdc.gov/epiinfo/index.html>, Centers for Disease Control and Prevention, USA). The frequency and prevalence of infection and their 95% confidence intervals were calculated. The differences among sex and age groups were assessed by Chi-square testing ( $\alpha=0.05$ ) and correlations were evaluated by Spearman's Rho.

No clinical signs of CanL or other diseases were observed.

The results of the SNAP® 4Dx® revealed antibodies against *B. burgdorferi* s.l. in one dog (0.6%; 95% CI 0.02–3.68%), anti-*Anaplasma* antibodies in five dogs (3.3%; 95% CI 1.10–7.66%), while ten dogs (6.7%; 95% CI 3.27–12.00%) tested positive for adult *D. immitis* female antigens. All samples ( $n=149$ ) tested negative for anti-*L. infantum* antibodies to both SNAP® *Leishmania* and INGEZIM *Leishmania*.

The qPCR screening revealed that 30 dogs (20.1%; 95% CI 14.02–27.48%) were positive for *L. infantum* DNA; 14 were positive on blood samples (9.4%; 95% CI 5.23–15.26%) and 17 were positive on conjunctival swab samples (11.4%; 95% CI 6.79–17.64%), with one animal expressing positive results for both the blood and swab sample.

The differences in prevalence among sex were not statistically significant (Table 1). Although a higher prevalence was noted in dogs older than 8 years of age as compared to younger dogs, the difference was not significant (Table 1).

Among the *Leishmania*-positive dogs, three were also harboring a *D. immitis* infection. However, there was no significant correlation between the two pathogens ( $R=0.066$ ;  $P=0.423$ ).

Many studies on the prevalence of CVBDs worldwide have compared prevalence among asymptomatic and ill

**Table 1** The statistical analysis of PCR-positive samples according to sex and age of the sampled dogs (n = 149)

	Frequency	Prevalence (%)	95% CI	P
Sex				
Male	18/89	20.2	12.45–30.07	1 ( $X^2 = 1$ ; d.f. = 1)
Female	12/60	20	10.78–32.33	
Age (years)				
≤ 3	9/47	19.1	9.15–33.26	0.061 ( $X^2 = 5.586$ ; d.f. = 2)
3–8	7/57	12.2	5.08–23.68	
≥ 8	14/45	31.1	18.17–46.65	

dogs, confirming the similar importance of both categories in the CVBDs transmission [9, 11–17]. Even though the importance of ill dogs in CVBDs transmission is more obvious, due to the presence of clinical signs, the asymptomatic dogs could be infected for months or even years, and still serve as reservoirs of pathogens to other hosts including humans [9].

In Romania, several studies targeting the occurrence of CVBPs in hosts and vectors have revealed a wide distribution, but with variable prevalence, according to various local ecological factors. In a molecular survey, *B. burgdorferi* s.l. was present in 1.4% of questing *Ixodes ricinus* ticks, with an average local prevalence ranging between 0.7 and 18.8% in all major regions of Romania [18]. In another study, *Borrelia* spp. DNA was identified in 138 of 534 (25.8%) questing *I. ricinus* ticks in eastern Romania [19]. The present study revealed antibodies against *B. burgdorferi* s.l. in only one dog (0.6%), but a low prevalence in canine hosts (6/1146; 0.5%) was also previously described in Romania [20].

Canine granulocytic anaplasmosis (CGA) is caused by *A. phagocytophilum*, the bacteria being transmitted by *I. ricinus* in Europe and infecting a wide range of domestic and wildlife hosts, including humans [21]. CGA has been reported in dogs from most regions of Romania, with an overall seroprevalence of 2.1% [20]. The overall prevalence of the infection in questing *I. ricinus* ticks was of 3.4%, with local prevalence values ranging between 0.2 and 22.4% [22].

In the present study no anti-*E. canis* antibodies were detected. Canine monocytic ehrlichiosis caused by *E. canis* is a disease transmitted by *Rhipicephalus sanguineus* s.l. ticks [20]. In Romania, an overall prevalence of *E. canis* of 2.1% (24/1146) was described in *R. sanguineus* s.l. ticks [20]. Seropositivity to *E. canis* is considered a risk factor for *D. immitis* and *L. infantum* infections [9].

The southern and southeastern areas of Romania are endemic for dirofilariasis caused by *D. immitis*, the dog heart worm [23]. Several studies have been conducted in order to evaluate the prevalence of heart worm infection.

In a study evaluating 390 dogs from five regions of Romania, a 6.9% PCR positivity, and a 7.1% seropositivity were described [23].

Although other studies performed in Romania revealed seroprevalences against *L. infantum*, varying between 3.7 and 8.3% [6, 7], all samples in the present study were seronegative. However, *L. infantum* DNA was detected, in 20.1% (30/149) of the tested dogs and in 9.4% of the blood samples and 11.4% of the swab samples. Similar findings were described by Solano-Gallego et al. [11] when investigating dogs from Mallorca, Spain, where 37% of the sampled asymptomatic animals were PCR positive for the skin samples and/or conjunctival swabs, but seronegative. The PCR-positive and seronegative dogs are considered clinically healthy and should be retested in 6 to 12 months to assess the possible progression of the infection towards disease [24]. The *L. infantum* infection triggers a humoral response after the incubation time, which in general can vary between 3 weeks and 5 months. Thus, the detection of *L. infantum* DNA without seroconversion is a common finding [11]. Undoubtedly, the finding of antibodies against *L. infantum* indicates exposure to the parasite, but it is not clear if these dogs are immune or if they will develop the disease at some point. In the present study, the retesting of the seronegative and PCR-positive clinically healthy dogs was not possible, and further studies are needed in order to have a better understanding of this category of dogs.

The prevalence of CVBD infections in dog kennels is generally higher than the prevalence in the general dog population in a certain area. This is because stray dogs are much more exposed to pathogens before they are gathered and kept at a high population density in the kennels [25]. Therefore, the dog kennels may act as important sources of zoonotic diseases of veterinary and public health interest.

In the actual European context of international adoptions of kennel dogs, there is a permanent risk for spread of pathogens and zoonotic transmission. A detailed knowledge of the risk zones in Europe as a potential origin for stray dogs is important in the prevention of this potentially neglected category of source of infection represented by the apparently healthy kennel dogs.

The study revealed a high prevalence of *L. infantum* which appears to be widespread in Argeş County, Romania. Further studies are imperative to actively search for the sand fly vectors of CanL in the nearby areas, as well as to evaluate the potential neglected role of the asymptomatic dogs in the reemergence of CVBDs in Romania.

#### Abbreviations

CVBDs: Canine vector-borne diseases; CanL: Canine leishmaniasis; s.l.: sensu lato; CGA: Canine granulocytic anaplasmosis; PBS: Phosphate-buffered saline; PCR: Polymerase chain reaction.

### Acknowledgements

The authors would like to thank the kennel personnel for all their help during the study.

### Authors' contributions

MOD and AMI designed the study. CDC, IAM and GD participated in the field-work. CDC, CM, EB, AMI and MOD serologically and molecularly identified the pathogen species. AMI and MOD performed the data analysis. CDC drafted the original manuscript. AMI, IAM, CM, EB, GD and MOD critically revised the manuscript for important intellectual content. All authors read and approved the final manuscript.

### Funding

MOD was the grant recipient of CNCS-UEFISCDI Grant Agency Romania, research grants PD38/2018 and TE299/2015. The work of MOD was supported by the research grants PD38/2018 and TE299/2015. The work of CDC, AMI, IAM and GD was supported by the research grant TE 299/2015. The publication was supported by funds from the National Research Development Projects to finance excellence (PFE)-37/2018–2020 granted by the Romanian Ministry of Research and Innovation.

### Availability of data and materials

All data generated or analysed during this study are included in this published article.

### Ethics approval and consent to participate

Not applicable.

### Consent for publication

Not applicable.

### Competing interests

The authors declare that they have no competing interests.

### Author details

<sup>1</sup> Department of Parasitology and Parasitic Diseases, University of Agricultural Sciences and Veterinary Medicine of Cluj-Napoca, Calea Mănăştur 3-5, 400372 Cluj-Napoca, Romania. <sup>2</sup> CDS-9, "Regele Mihai I al României" Life Science Institute, University of Agricultural Sciences and Veterinary Medicine of Cluj-Napoca, Calea Mănăştur 3-5, 400372 Cluj-Napoca, Romania. <sup>3</sup> Department of Microbiology, Immunology and Epidemiology, University of Agricultural Sciences and Veterinary Medicine of Cluj-Napoca, Calea Mănăştur 3-5, 400372 Cluj-Napoca, Romania. <sup>4</sup> Department of Animal Health, Faculty of Veterinary Science, Regional Campus of International Excellence 'Campus Mare Nostrum', University of Murcia, 30100 Murcia, Spain.

Received: 31 March 2020 Accepted: 28 July 2020

Published online: 03 August 2020

### References

- Day MJ. One health: the importance of companion animal vector-borne diseases. *Parasites Vectors*. 2011;4:49.
- Otranto O, Dantas-Torres F, Breitschwerdt EB. Managing canine vectorborne diseases of zoonotic concern: part one. *Trends Parasitol*. 2009;25:157–63.
- Day MJ. The immunopathology of canine vector-borne diseases. *Parasites Vectors*. 2011;4:48.
- Mihalca AD, Cazan CD, Sulesco T, Dumitrache MO. A historical review on vector distribution and epidemiology of human and animal leishmanioses in Eastern Europe. *Res Vet Sci*. 2019;123:185–91.
- Mircean V, Dumitrache MO, Mircean M, Bolfa P, Györke A, Mihalca AD. Autochthonous canine leishmaniasis in Romania: neglected or (re)emerging? *Parasites Vectors*. 2014;7:135.
- Dumitrache MO, Nachum-Biala Y, Gilad M, Mircean V, Cazan CD, Mihalca AD, et al. The quest for canine leishmaniasis in Romania: the presence of an autochthonous focus with subclinical infections in an area where disease occurred. *Parasites Vectors*. 2016;9:297.
- Cimpan AA, Diakou A, Papadopoulos E, Miron LD. Serological study of exposure to *Leishmania* in dogs living in shelters, in South-East Romania. *Rev Rom Med Vet*. 2019;29:54–8.
- Sauda F, Malandrucchio L, Macrì G, Scarpulla M, de Liberato C, Terracciano G, et al. *Leishmania infantum*, *Dirofilaria* spp. and other endoparasite infections in kennel dogs in Central Italy. *Parasite*. 2018;25:2.
- Cardoso L, Mendão C, Madeira de Carvalho L. Prevalence of *Dirofilaria immitis*, *Ehrlichia canis*, *Borrelia burgdorferi* sensu lato, *Anaplasma* spp. and *Leishmania infantum* in apparently healthy and CVBD-suspect dogs in Portugal—a national serological study. *Parasites Vectors*. 2012;5:62.
- Francino O, Altet L, Sanchez-Robert E, Rodriguez A, Solano-Gallego L, Alberola J, et al. Advantages of real-time PCR assay for diagnosis and monitoring of canine leishmaniasis. *Vet Parasitol*. 2006;137:214–21.
- Solano-Gallego L, Miró G, Koutinas A, Cardoso L, Pennisi MG, Ferrer L, et al. LeishVet guidelines for the practical management of canine leishmaniasis. *Parasites Vectors*. 2011;4:86.
- Aoun O, Mary C, Roqueplo C, Marié JL, Terrier O, Levieue A, et al. Canine leishmaniasis in south-east of France: screening of *Leishmania infantum* antibodies (western blotting, ELISA) and parasitaemia levels by PCR quantification. *Vet Parasitol*. 2009;166:27–31.
- Moshfe A, Mohebbali M, Edrissian G, Zarei Z, Akhoundi B, Kazemi B, et al. Canine visceral leishmaniasis: asymptomatic infected dogs as a source of *L. infantum* infection. *Acta Trop*. 2009;112:101–5.
- Cabezón O, Millán J, Gomis M, Dubey JP, Ferroglio E, Almería S. Kennel dogs as sentinels of *Leishmania infantum*, *Toxoplasma gondii*, and *Neospora caninum* in Majorca Island, Spain. *Parasitol Res*. 2010;107:1505–8.
- Wang JY, Ha Y, Gao CH, Wang Y, Yang YT, Chen HT. The prevalence of canine *Leishmania infantum* infection in western China detected by PCR and serological tests. *Parasites Vectors*. 2011;4:69.
- Fakhar M, Motazedian MH, Asgari Q, Kalantari M. Asymptomatic domestic dogs are carriers of *Leishmania infantum*: possible reservoirs host for human visceral leishmaniasis in southern Iran. *Comp Clin Pathol*. 2012;21:801–7.
- Pantchev N, Schnyder M, Vrhovec MG, Schaper R, Tsachev I. Current surveys of the seroprevalence of *Borrelia burgdorferi*, *Ehrlichia canis*, *Anaplasma phagocytophilum*, *Leishmania infantum*, *Babesia canis*, *Angiostrongylus vasorum* and *Dirofilaria immitis* in dogs in Bulgaria. *Parasitol Res*. 2015;114:117–30.
- Kalmár Z, Mihalca AD, Dumitrache MO, Gherman CM, Magdaş C, Mircean V, et al. Geographical distribution and prevalence of *Borrelia burgdorferi* genospecies in questing *Ixodes ricinus* from Romania: a countrywide study. *Ticks Tick-Borne Dis*. 2013;4:403–8.
- Răileanu C, Moutailler S, Pavel I, Porea D, Mihalca AD, Savuta G, et al. *Borrelia* diversity and co-infection with other tick borne pathogens in ticks. *Front Cell Infect Microbiol*. 2017;7:36.
- Mircean V, Dumitrache MO, Györke A, Pantchev N, Jodies R, Mihalca AD, et al. Seroprevalence and geographic distribution of *Dirofilaria immitis* and tick borne infections (*Anaplasma phagocytophilum*, *Borrelia burgdorferi* sensu lato, and *Ehrlichia canis*) in dogs from Romania. *Vector Borne Zoonotic Dis*. 2012;12:595–604.
- Egyed L, Élő P, Sréter-Lancz Z, Széll Z, Balogh Z, Sréter T. Seasonal activity and tick-borne pathogen infection rates of *Ixodes ricinus* ticks in Hungary. *Ticks Tick Borne Dis*. 2012;3:90–4.
- Matei IA, Kalmár Z, Magdaş C, Magdaş V, Toriay H, Dumitrache MO, et al. *Anaplasma phagocytophilum* in questing *Ixodes ricinus* ticks from Romania. *Ticks Tick Borne Dis*. 2014;6:408–13.
- Ionică AM, Matei IA, Mircean V, Dumitrache MO, D'Amico G, Györke A, et al. Current surveys on the prevalence and distribution of *Dirofilaria* spp. and *Acanthocheilonema reconditum* infections in dogs in Romania. *Parasitol Res*. 2015;114:975–82.
- Solano-Gallego L, Morell P, Arboix M, Alberola J, Ferrer L. Prevalence of *Leishmania infantum* infection in dogs living in an area of canine leishmaniasis endemicity using PCR on several tissues and serology. *J Clin Microbiol*. 2001;39:560–3.
- Simonato G, Frangipane di Regalbono A, Cassini R, Traversa D, Beraldo P, Tesarini C, et al. Copromicroscopic and molecular investigations on intestinal parasites in kennel dogs. *Parasitol Res*. 2015;114:1963–70.

### Publisher's Note

Springer Nature remains neutral with regard to jurisdictional claims in published maps and institutional affiliations.